

VTOR VOC Value Series Recessed Wall VOC Sensor

Senses volatile organic compounds
0-5/10V/2 and 3-wire 4-20mA transmitter
Sleek & functional low-profile design



DESCRIPTION

The VTOR is capable of sensing thousands of VOC's coming from sources such as paints, glues, cleaners, alcohol, building products, smoke, and myriad other harmful or offensive gases. It's ability to sense these contaminants in addition to breath and other bodily functions makes it the preferred alternative or compliment to CO2 occupancy sensing.

The VTOR Value Series ensures that odor and ventilation issues are never a topic of conversation. An array of analog outputs and thermistor options accommodate any installation and keep occupants breathing easy.

APPLICATIONS

- Controlling ventilation in response to occupancy
- Ventillation control
- Economizer control
- Cafeterias, conference rooms, restrooms and public assembly areas

FEATURES

Sleek and functional design

- Standard wall plate size fits most single gang junction boxes
- Flush-mount screw plugs for tamper-resistance
- Ideal for schools, hotels, offices, bathrooms, etc.

Superior sensing

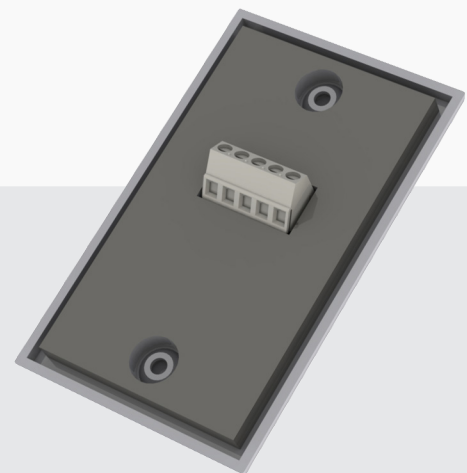
- Humidity compensation for higher accuracy
- Gasket ensures excellent measurement accuracy

Industry-leading warranty

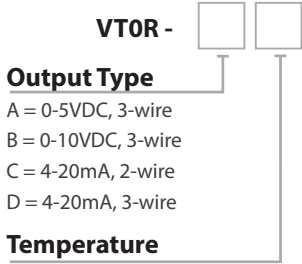
- 7-year limited warranty on electronics; sensor element 2 years

Easy Wiring

- Streamlined enclosure design and 45° terminals ensure quick and simple installation



ORDERING



Output Type

- A = 0-5VDC, 3-wire
- B = 0-10VDC, 3-wire
- C = 4-20mA, 2-wire
- D = 4-20mA, 3-wire

Temperature

- A = None
- C = 100Pt (385)
- D = 1000Pt (385)
- E = 10k type 2
- F = 10k type 3
- G = 10k type 3 w/11k shunt
- H = 3k
- I = 2k2
- J = 1k8
- K = 20k
- L = 100k

SPECIFICATIONS

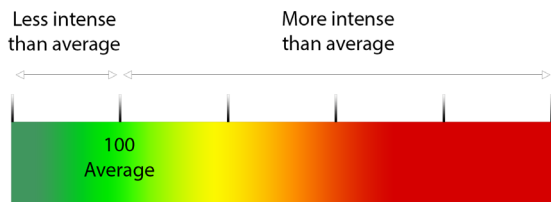
Power Supply	12-30VDC/24VAC ⁽¹⁾ , 24mA max
Output	Analog outputs 0-10V, 0-5V, 2-wire or 3-wire 4-20mA
Output scaling	VOC intensity 0-500 (relative intensity)
Thermistor Options	Yes, see ordering table on left
VOC Sensor Performance	Type MOS
	Gas Ethanol
	Range 0-1000ppm of ethanol equivalent
	Response Time <10s
	Humidity Compensation Yes
Enclosure	Dimensions 4.45" h x 2.7" w x 0.5" d (depth measured from wall)
	RH 0 to 90% RH (operating) 0- to 80% (storage)
	Temp Rating 14 to 122°F (-10 to 50°C) (operating) 5 to 30°C (storage)
Compliance	CE, RoHS

(1) One side of transformer, secondary is connected to signal common. Dedicated transformer is recommended. 15-30VDC/24VAC power supply voltage required for 10 volt output.

WHAT IS VOC?

VOC means volatile organic compounds which can be found in a number of harmful and other gases, odors, and smoke. Some example contaminants are listed on the right.

The output of this product has been converted from a raw Ethanol concentration into an intensity value, ranging from 0-500. An environment with normal air quality will typically read about 100 on this scale. Suggested control actions are listed to the right.



VOC Contaminant	Sources
Harmful Gases	Paints, glues, solvents, furniture, mattresses, carpet, flooring, building products
Other gases	Alcohol, cleaners, perfume, cooking smells
Odors	Rotten food, flatulence, breath, cosmetics, pet pee
Smoke	Cigarette smoke

VOC Level	Suggested Action
0-200	None, air quality is good
200-300	Ventilate, purify
300-500	Ventilate, purify intensely

FULLY CUSTOMIZABLE

Sell your brand of sensor

- Private label with low up-front cost
- Minimum order of only 10 units
- Market your brand, your service
- Direct all service calls to you

Professional look and feel

- Color printed with UV ink
- No bulky, cheap-looking stickers
- High quality, long lasting marketing

Call for a sample today!



Warning: Refer to installation instructions that accompany product and heed all safety instructions.